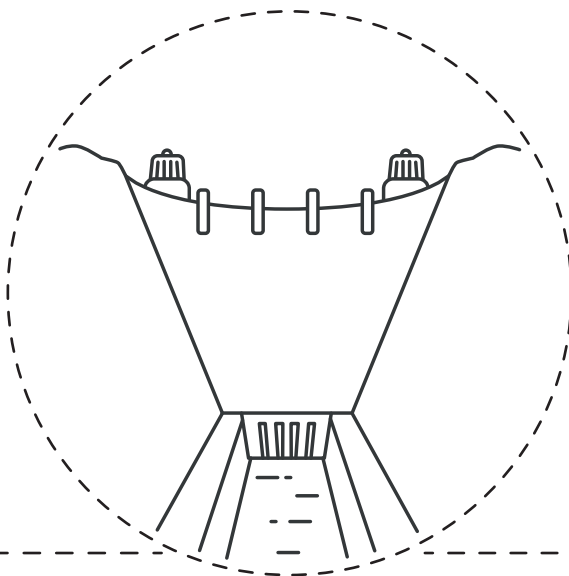




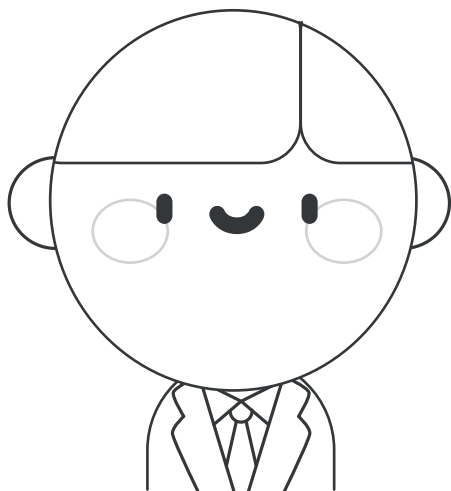
# Hoover Dam Facts

## 10 Fun Facts About The Hoover Dam!

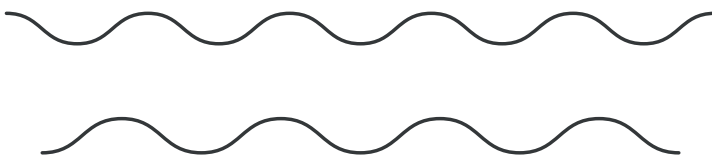
The Hoover Dam, originally known as the Boulder Dam, is a concrete arch-gravity dam located in the Black Canyon of the Colorado River, at the Arizona-Nevada border.



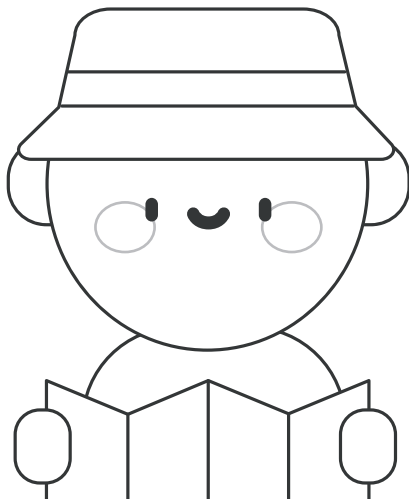
It was renamed in honor of President Herbert Hoover, who played a significant role in its construction.



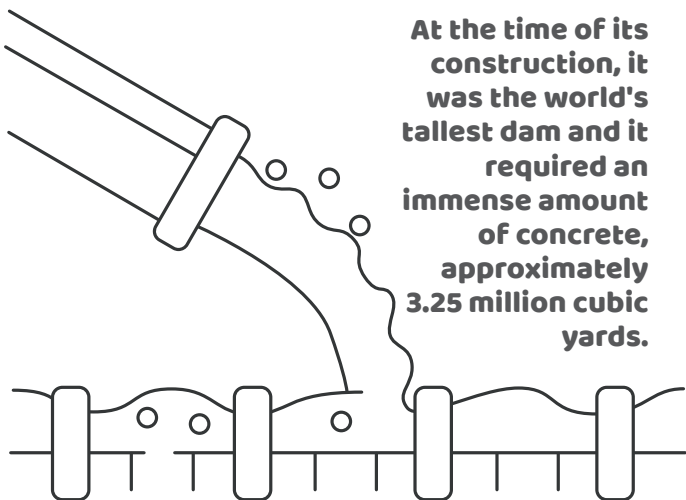
The dam's main purpose was to provide flood control, irrigation water, and hydroelectric power to support the development of the arid southwestern United States.



The Hoover Dam is a major sightseeing destination and a National Historic Landmark, attracting about seven million visitors from around the world every year.



At the time of its construction, it was the world's tallest dam and it required an immense amount of concrete, approximately 3.25 million cubic yards.

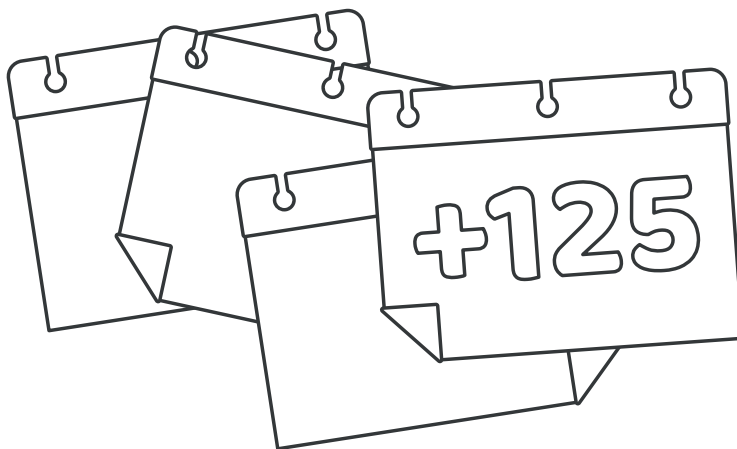




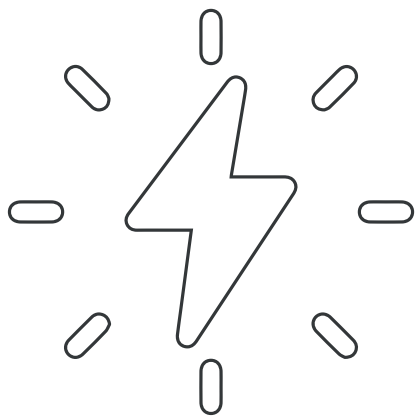
# Hoover Dam Facts

## 10 Fun Facts About The Hoover Dam!

Engineers used a giant ice-making system to speed up the cooling of the amount of concrete. Without it, the concrete would have taken 125 years to dry.

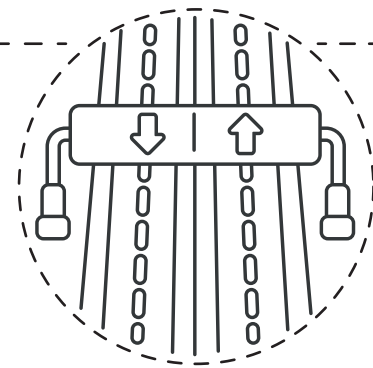


The dam's main turbines generate hydroelectric power, which supplies about 4 billion kilowatt-hours of energy to various regions, including Los Angeles and San Diego.



The dam's construction led to the development of Boulder City, a federal land city built to house the workers.

Hoover Dam's construction was so massive that it used enough concrete to build a two-lane highway from San Francisco to New York City.



The Hoover Dam is often compared in size to the Washington Monument and the base of the dam is equivalent to two football fields thick.

