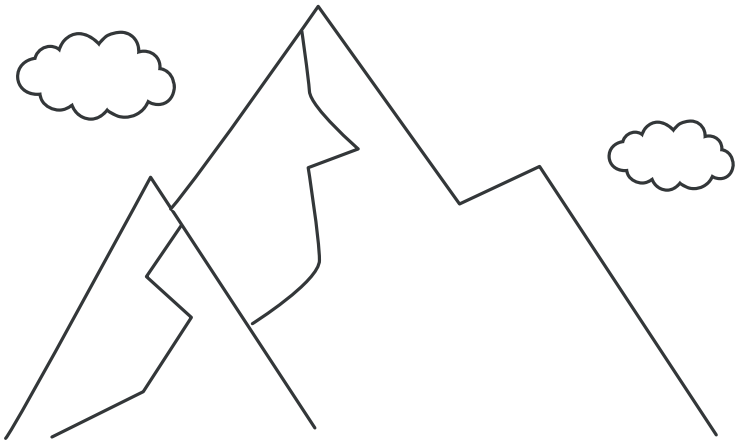




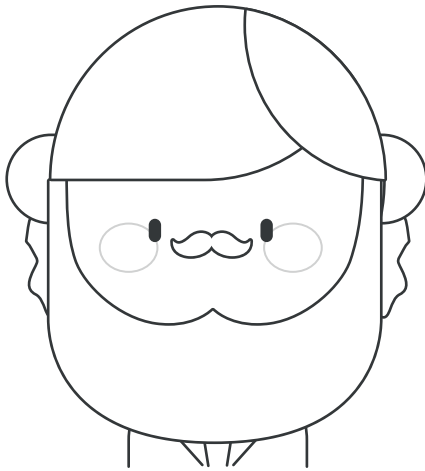
Mt. Everest Facts

10 Fun Facts About Mt. Everest!

Mount Everest is located between the border of Nepal and Tibet. Forming part of the Himalayan Mountains, it is over 60 million years old and the highest peak on Earth.

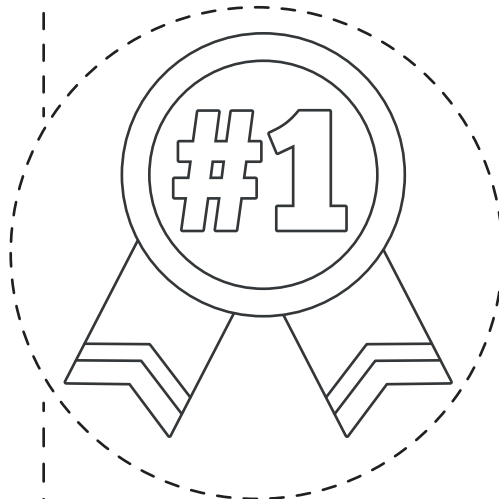
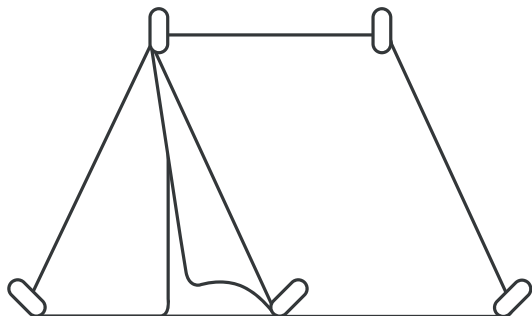


It was named after Sir George Everest, a British surveyor general of India.



At 29,032 feet (8,849 meters) above sea level, it is considered the world's highest mountain and is often called the top of the world.

The Everest base camp trek takes a 10- to 14-day round trip, and then it takes an average of 40 days to climb to the top of Mount Everest during a specific summit window.



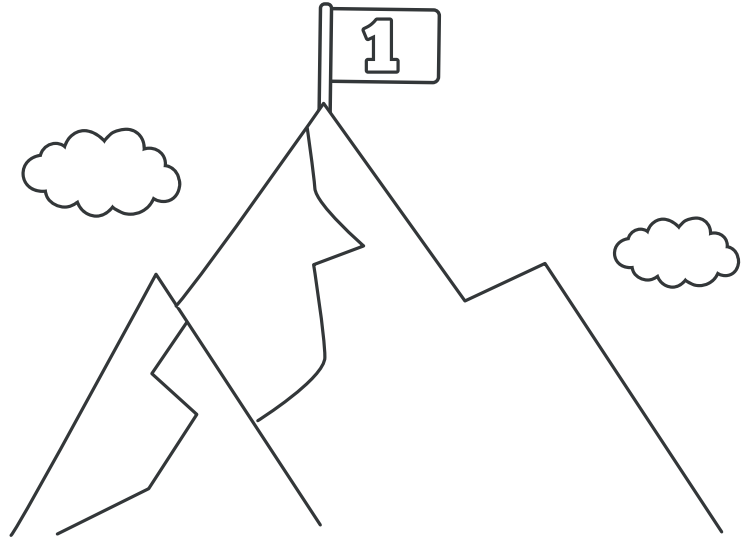
On May 29, 1953, Sir Edmund Hillary from New Zealand became the first person to reach the Everest summit, along with Sherpa mountaineer Tenzing Norgay.



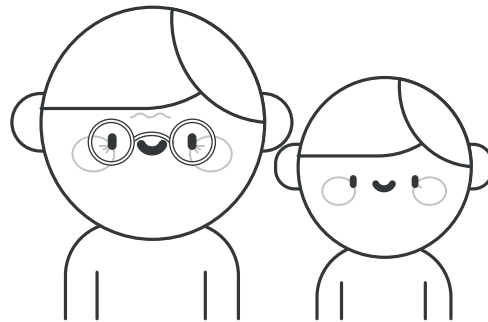
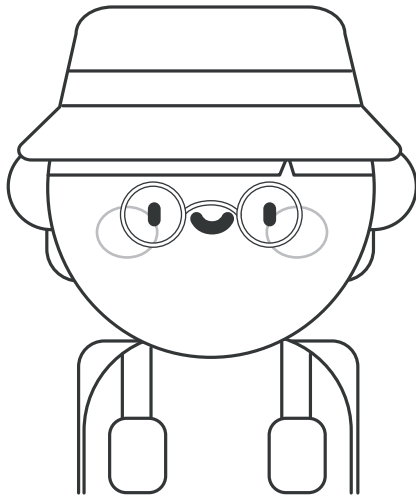
Mt. Everest Facts

10 Fun Facts About Mt. Everest!

Sherpa people are an ethnic group who live in the high mountain region of the eastern Himalayas and are considered the first climbers of Everest.

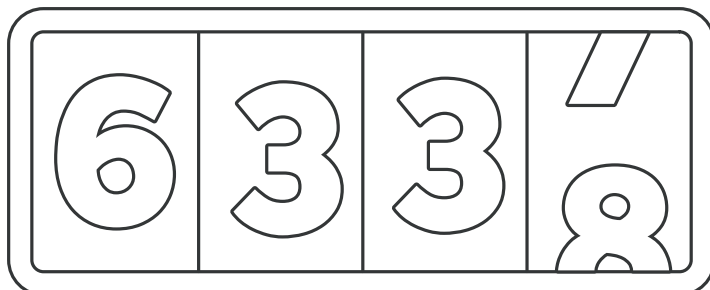


Junko Tabei was the first woman to reach the summit of Everest in 1975.



Yuichiro Miura is the oldest person in the world to ever climb to the summit of Mount Everest at the age of 80, and Jordan Romero is the youngest person to reach the tallest peak, aged just 13.

The average price of an Everest expedition is \$58,069 USD.



As of January 2023, 6,338 people have climbed Mount Everest and reached the summit.