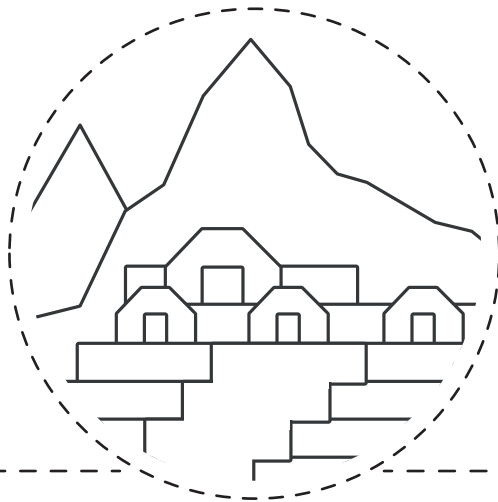


Machu Picchu Facts



10+ Fun Facts About Machu Picchu!



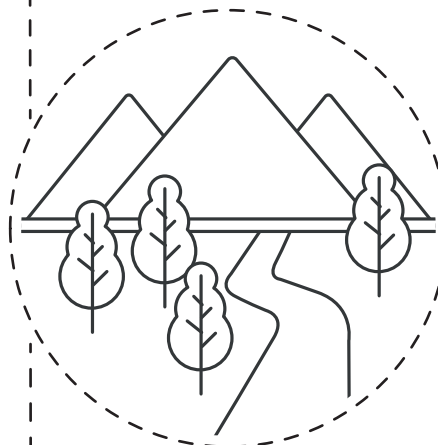
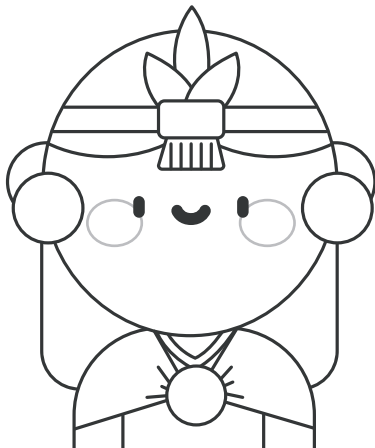
Machu Picchu, also known as the lost city of the Incas, is an ancient Inca citadel and archaeological site from the 15th century set high in the Andes Mountains in Peru.

Machu Picchu was designated a UNESCO World Heritage site in 1983. It is one of the few significant pre-Columbian ruins found nearly intact.



It is considered one of the New 7 wonders of the world.

Pachacuti Inca Yupanqui is credited with founding the site of Machu Picchu.



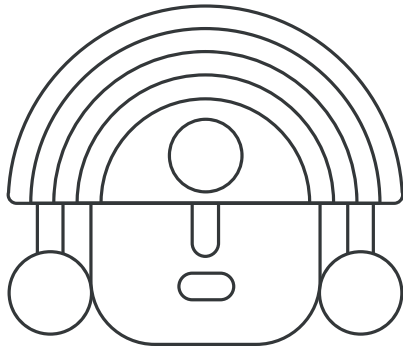
The famous Inca trail to Machu Picchu is described as the world's most extraordinary hike and takes four to five days of walking, where you can see the mountains, jungles, and end up in the spectacular Machu Picchu.

Machu Picchu Facts

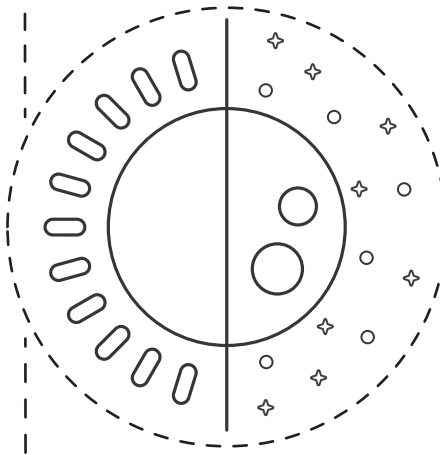


10+ Fun Facts About Machu Picchu!

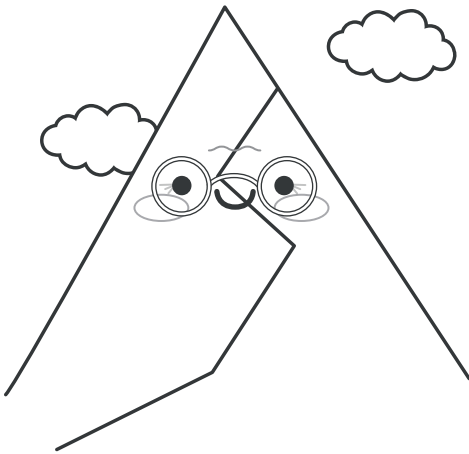
The Incan empire was the largest in pre-Columbian America and extended along the Pacific coast and the Andes mountain range.



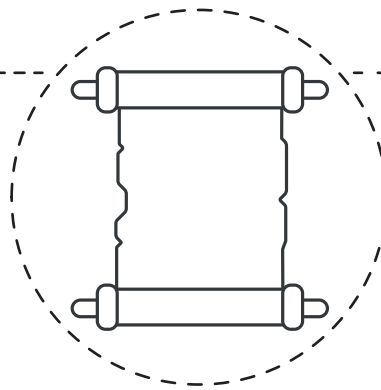
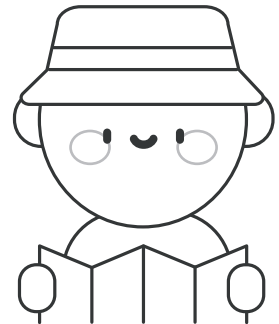
The Temple of the Sun was a sacred religious site used to make sacrifices and hold religious ceremonies, while the Temple of the Moon was used for burials, as a ceremonial bathing complex, or as an astronomical observatory.



In Quechua, the local language, Machu means "old" or "old person," while Picchu means "pyramid." The name of the site is interpreted as "old mountain."

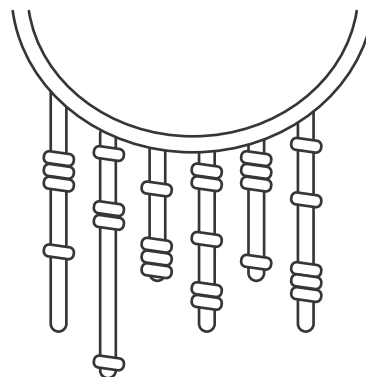
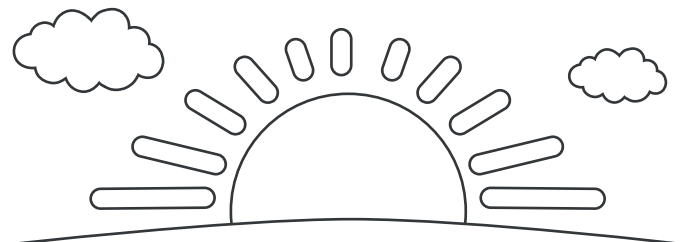


Machu Picchu can be visited all year round with or without a tour guide, but the best time is from April to October to avoid the rainy season.



The Inca empire had no written language, so there were no written records of the site while it was in use.

During the summer solstice, at dawn, the lights rise through one of the Temple of the Sun windows and illuminate the ceremonial stone within.



The Inca Civilization used quipu as their primary communication system. Quipu could communicate a message based on a string's fiber, color, and spin.